

Technical Data



TRN010KTL
TRN012KTL
TRN015KTL
TRN017KTL
TRN020KTL
TRN025KTL

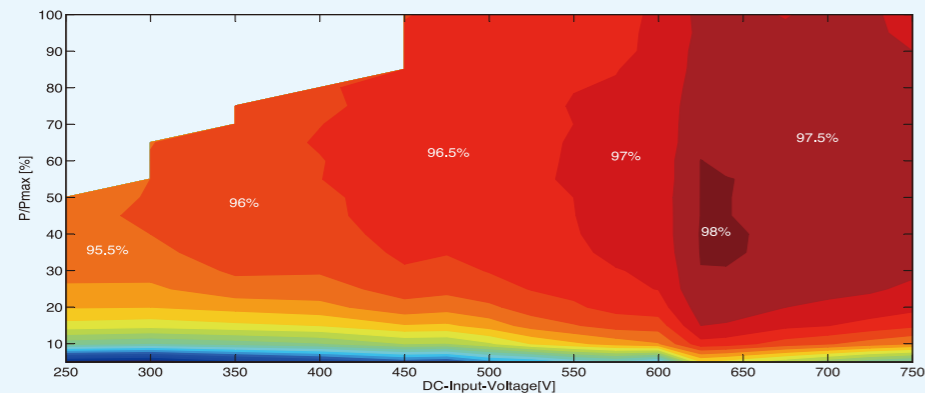
Features:

- > Max efficiency 98.2%
- > High efficiency across wide operation range
- > Wide range of input DC and MPPT voltage
- > Dual independent MPPT input
- > Integrated DC switch

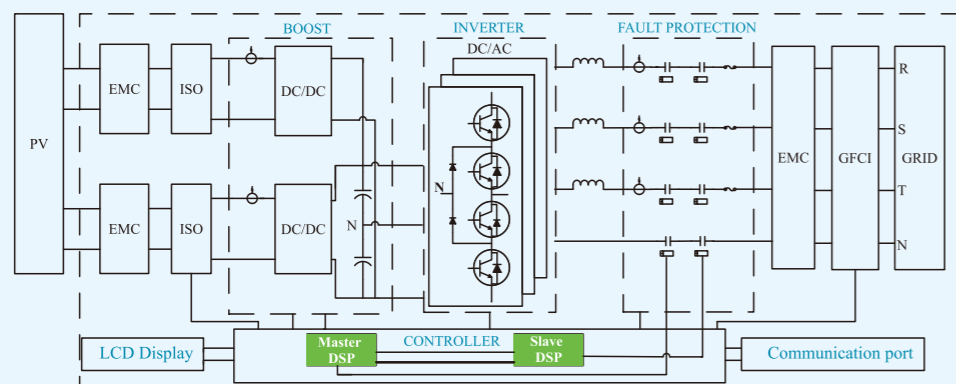
Certificates and Approvals:

CE, VDE AR-N-4105, VDE 0126-1-1+A1, G83/2, G59/2, G59/3, AS4777, ENEL, RD1663, IEC61727, UTE C15-712, MEA, PEA, CQC, NB/T32004-2013, ROHS, REACH

Efficiency Curve (TRN017KTL):



Circuit Diagram:



TRN Series

TRN010KTL / TRN012KTL / TRN015KTL / TRN017KTL / TRN020KTL / TRN025KTL

Model	TRN010KTL	TRN012KTL	TRN015KTL	TRN017KTL	TRN020KTL	TRN025KTL
Rated AC power	10000 W	12000 W	15000 W	17000 W	20000 W	25000 W
Maximum AC power	10000VA	12000VA	15000VA	17000VA	20000VA	25000VA
Input						
Maximum input power	10500 W	12800 W	16000W	18200W	21500W	27000 W
Maximum input voltage	1000 Vdc	1000 Vdc	1000 Vdc	1000 Vdc	1000 Vdc	1000 Vdc
MPP voltage range / rated input voltage	200 - 800 Vdc / 600 Vdc	200 - 800 Vdc / 600 Vdc	250 - 800 Vdc / 600 Vdc	250 - 800 Vdc / 600 Vdc	250 - 800 Vdc / 600 Vdc	250 - 900 Vdc / 600 Vdc
Maximum input current	10 Adc / 10 Adc	10 Adc / 20 Adc	20 Adc / 20 Adc	20 Adc / 20 Adc	20 Adc / 20 Adc	20 Adc / 30 Adc
Startup voltage	200 Vdc	200 Vdc	200 Vdc	200 Vdc	200 Vdc	200 Vdc
DC switch	integrated	integrated	integrated	integrated	integrated	integrated
Initial feeding voltage	250 Vdc	250 Vdc	300 Vdc	300 Vdc	300 Vdc	300 Vdc
Number of inputs	1+1	1+2	2+2	2+2	2+2	2+3
MPPT number	2	2	2	2	2	2
Output						
Nominal AC grid	3 / N / PE; 220 / 380 V / 3 / N / PE; 230 / 400 V / 3 / N / PE; 240 / 415 V					
Voltage range	310 Vac - 470 Vac (May vary as per corresponding country's grid standard)					
Frequency range	50 Hz, 60 Hz / -5 Hz ... +5 Hz					
Power factor	Rated >0.99 0.8 leading...0.8 lagging controllable					
Maximum current	15,5 Aac	18,5Aac	23 Aac	26 Aac	30.5 Aac	38 Aac
DC current injection	<1‰	<1‰	<1‰	<1‰	<1‰	<1‰
Current Harmonic Distorsion (THDi)	<3%	<3%	<3%	<3%	<3%	<3%
System						
Maximum efficiency	>98,2%	>98,2%	>98,2%	>98,2%	>98,3%	>98,3%
European efficiency	>97,7%	>97,7%	>97,7%	>97,7%	>97,8%	>97,8%
MPPT efficiency	>99,9%	>99,9%	>99,9%	>99,9%	>99,9%	>99,9%
Topology	Transformerless					
Anti-Islanding protection	Yes	Yes	Yes	Yes	Yes	Yes
Surge protection	Optional	Optional	Optional	Optional	Optional	Optional
Night power consumption	<0,2 W	<0,2 W	<0,2 W	<0,2 W	<0,2 W	<0,2 W
Detecting earth leakage	Yes	Yes	Yes	Yes	Yes	Yes
Cooling	Smart Fan cooling					
Mechanical Spec.						
Dimensions in mm	520 x 180 x 740	520 x 180 x 740	520 x 180 x 740	520 x 180 x 740	520 x 180 x 740	520 x 180 x 740
Weight	30 Kg	30 Kg	35 Kg	35 Kg	35 Kg	36Kg
IP degree	IP65					
Display	LCD 3.5 Inch					
Function key	4					
Data interface	RS232 / RS485 / Ethernet / WiFi / GPRS / USB					
Thermal protection	Yes					
Audible noise level	<45dB					
Ambient operating temp.	-25 °C - +60 °C (>45 °C derating)					
Casing	Aluminium					